

CHAMOT

Recombinant Human IL-26

CM030-5HP
CM030-20HP
CM030-100HP
CM030-500HP
CM030-1000HP



CHAMOT

喬默生物技術(上海)有限公司
CHAMOT BIOTECHNOLOGY CO., LTD.

CONTENT

1 产品简介

2 产品组成

3 产品储存

4 产品使用

Recombinant Human IL-26 (Interleukin-26)

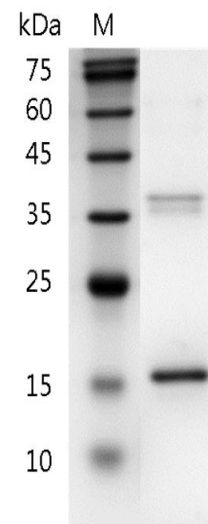
编号:	CM030-5HP	规格:	5 μ g
	CM030-20HP		20 μ g
	CM030-100HP		100 μ g
	CM030-500HP		500 μ g
	CM030-1000HP		1 mg

类别: 重组蛋白 应用: Functional Assay

产品简介

描述: Interleukin 26 (IL-26), is a natural human antimicrobial that promotes immune sensing of bacterial and host cell death. IL-26, a human TH17 cell-derived cytokine, is a cationic amphipathic protein that kills extracellular bacteria via membrane-pore formation. Furthermore, TH17 cell-derived IL-26 formed complexes with bacterial DNA and self-DNA released by dying bacteria and host cells. The IL-26 – DNA complexes triggered the production of type I interferon by plasmacytoid dendritic cells via activation of Toll-like receptor 9, but independently of the IL-26 receptor.

来源: *Escherichia coli*
纯度: >98% as determined by SDS-PAGE. Ni-NTA chromatography
生物学活性: Measure by its ability to induce IL-10 secretion in COLO205 cells. The ED₅₀ for this effect is < 150 ng/mL.
内毒素检测: < 0.1 EU per 1 μ g of the protein by the LAL method.
蛋白序列: MKHKQSSFTKSCYPRGTLTQAVDAL
 YIKAAWLKATIPEDRIKNIRLLKKKTK
 KQFMKNCQFQEQLLSFFMEDVFGQ



SDS-PAGE analysis of recombinant human IL-26

LQLQGCKKIRFVEDFHSLRQKLSHCI
SCASSAREMKSITRMKRIFYRIGNKGI
YKAISELDILLSWIKKLESSQ with
polyhistidine tag at the C-
terminus

产品组成

成分： 从含有 1X PBS, pH 8.0 溶液中冻干的蛋白质.

产品储存/运输

产品形式	储存温度	储存时间
冻干粉	-20°C至-80°C	自收到之日起1年
重悬液 (初始)	2°C至8°C	不超过1周
重悬液 (经稀释)	-20°C至-80°C	3到6个月

运输方式： 蓝冰

产品使用

- 1、开盖前，建议3000-3500rpm离心5min。
- 2、推荐使用无菌水重悬冻干粉，溶液浓度不低于100µg/mL，不高于1mg/mL，并室温静置至少20min以充分溶解。勿涡旋剧烈振荡。
- 3、重悬后的溶液，2-8°C无菌保存不超过1周。
- 4、如需长期保存，推荐使用无菌的含载体蛋白（如0.1%BSA、10%FBS或5%HSA）的溶液进一步稀释（不低于10ug/mL）后分装保存，-20°C至-80°C无菌保存3到6个月。无血清实验需求时，可更换为5%海藻糖溶液作为载体。避免反复冻融。

WB= Western Blot; IP= Immunoprecipitation; IF= Immunofluorescence; IHC= Immunohistochemistry;
FACS= Fluorescence activated Cell Sorting; FA= Functional Assay